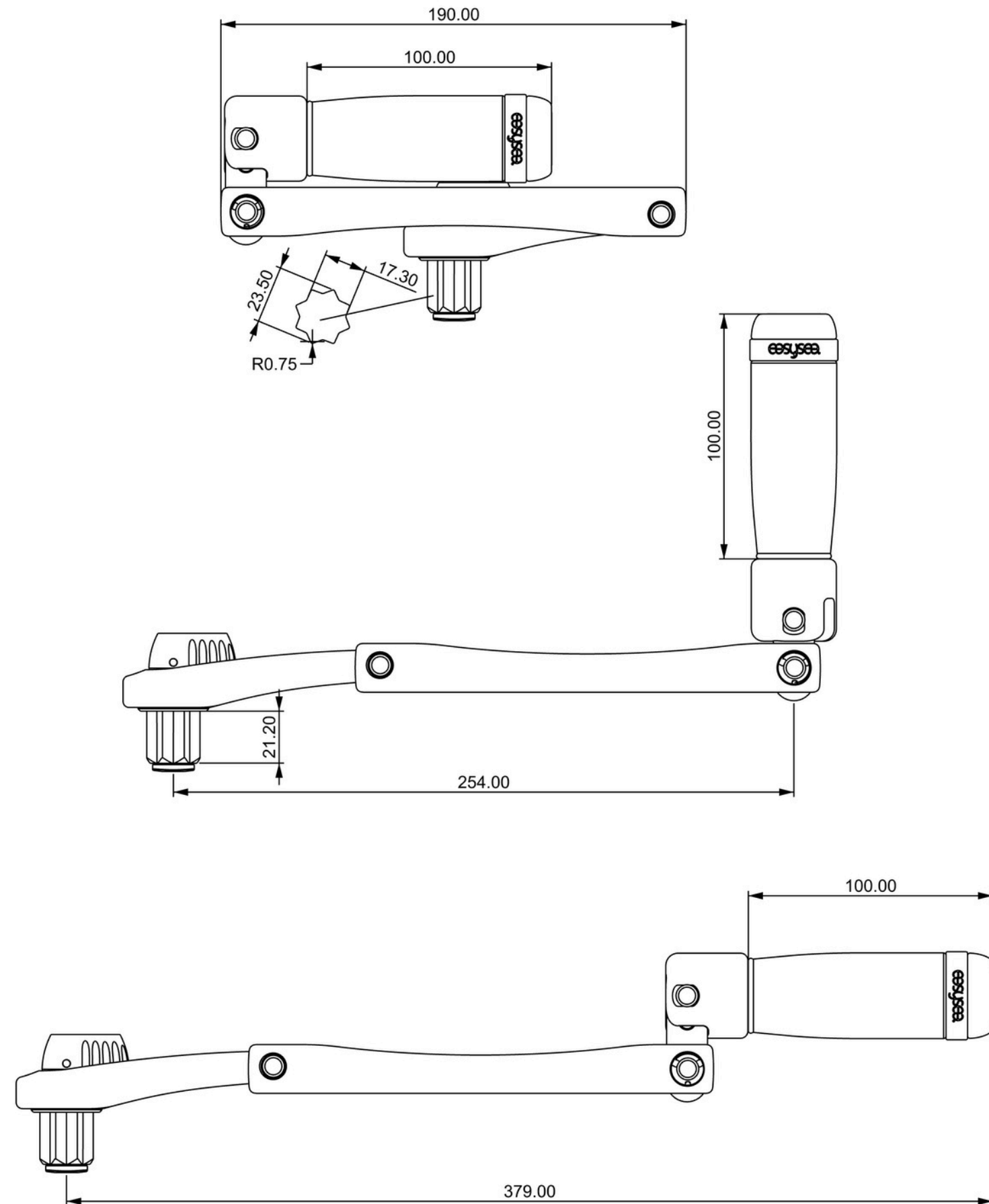


TECHNICAL CHARACTERISTICS

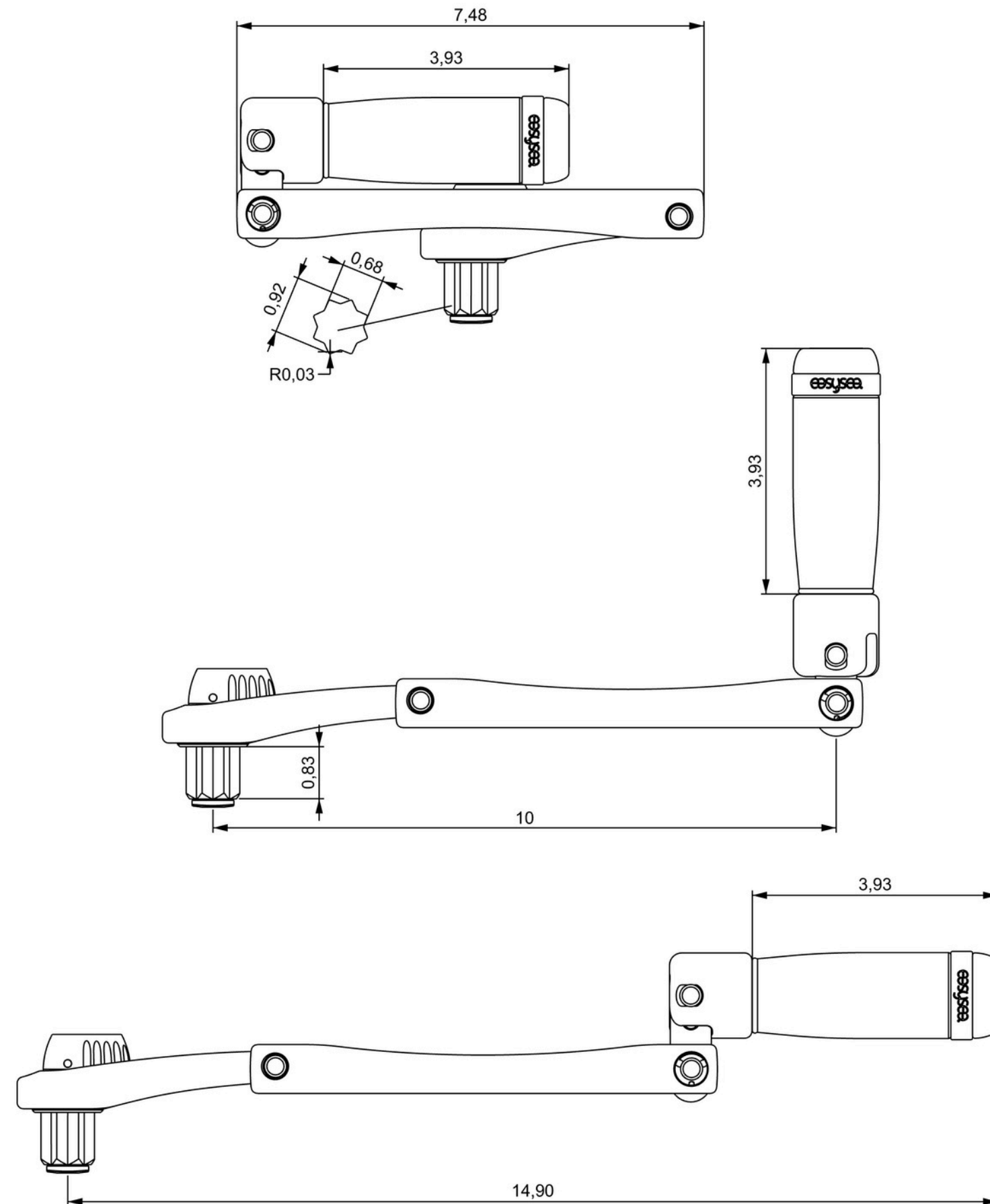
Flipper Max - Foldable winch handle of 25cm



ATTRIBUTE	VALUE
MAIN MATERIAL	Aluminum 6082
TREATMENT	hard anodization matte black
PINS MATERIAL	stainless steel inox 316L
CLOSED DIMENTIONS	190 mm
OPEN LEVER LENGTH	254 mm
EXTENDED LEVER LENGTH	379 mm
WINCH SIZE	>46
WEIGHT	722 gr
MAX WORKING LOAD	400 Kg
BREAKING LOAD	800 Kg

TECHNICAL CHARACTERISTICS

Flipper Max - Foldable winch handle of 10 in



ATTRIBUTE	VALUE
MAIN MATERIAL	Aluminum 6082
TREATMENT	hard anodization matte black
PINS MATERIAL	stainless steel inox 316L
CLOSED DIMENTIONS	7,48 in
OPEN LEVER LENGTH	10 in
EXTENDED LEVER LENGTH	14,90 in
WINCH SIZE	>46
WEIGHT	1,59 lb
MAX WORKING LOAD	881 lb
BREAKING LOAD	1763 lb