

PRODUCT MANUAL

CP 2024/5-1



SMACO®

www.smacodive.com

P02

About Us

P06

Snorkeling equipment series

P16

Portable diving series

P26

Scuba diving equipment series

P43

Inflation Equipment and Accessories



+86 755-28483655



www.smacodive.com



smaco@smaco.com.cn



No. 430, Jihua Road, Bantian Street, Longgang District, Shenzhen City, Guangdong Province, China

CONTENTS



SMACO

SPECIALIZING IN AQUATIC PRODUCTS FOR 11 YEARS



Building a joyful world of close interaction between humans and nature
through the SMACO product ecosystem

Savoring every moment spent in harmony with nature!

ABOUT SMACO

Shenzhen CP-Link Electronic Co., Ltd., established in 2013 in Longgang District, Shenzhen, blends competition with national identity. Focused on delivering top-tier products and services, our expertise spans outdoor sports, emergency rescue, and technology innovation.

As a national-level high-tech enterprise, we pioneer outdoor sports gear, aquatic smart devices, portable emergency rescue equipment, and comprehensive industry solutions. Our multidisciplinary approach covers leisure, rescue, business, and environmental sectors. We invest heavily in R&D, customer service, and collaborations nationwide.

With over 60 patents and a global presence in 40+ countries, we are committed to advancing underwater and surface intelligence, leveraging Beidou positioning, communications, and multi-sensor integration for unmanned systems. SMACO aims to be a premier brand in life-saving technology, ensuring safety in every minute.





High Precision Air Explosion-proof Technology

Air Decompression Technology

Multiple Air Filtration Technology

Multidisciplinary simulation and digital twin technology for underwater systems

Automatic Sewage Technology

Route planning

Underwater Cabled ultra-long-distance Communication

High Torque Waterproof Motor Technology

Underwater multi-degree-of-freedom Motion Platform

Visual Recognition and Automatic Control Algorithm

Waterproof Sealing Mechanism and Strength Design

Sonar Detection Technology

Self-adaptive Control

Control Terminal APP Development

Motor ESC technology

Intelligent Control of Underwater Power Supply

Motor Propulsion System Matching Technology

Cooling Technology of Underwater System

Underwater Positioning

Nano Protection Technology

Wireless Communication

High Efficiency Blade Propulsion Technology

62+ Patent certificates / 30+ Underwater innovation technology

46+

SMACO PRODUCTS ARE SOLD IN OVER 40 COUNTRIES AND
REGIONS AROUND THE WORLD



America Britain Italy Germany French Sweden Australia New Zealand Canada Mexico Russia China
Switzerland Singapore Spanish Portugal Netherland Egypt Czech Fiji Maroc Brazil Argentina Serbia
Belgium Maldives Malaysia Japan Indonesia Hungary Gibraltar Croatia Denmark Finland Hellenic Norway
Korea Slovak South Africa Ukraine Viet Nam Turkey Thailand Romania Poland Philippines



Snorkeling Equipment Series

Adult Snorkeling Mask / Children's Snorkeling Mask / Snorkeling Kit
Snorkeling Set / Life-saving Bracelet / Electric Surfboard

SNORKEL FULL FACE MASK

Adult Full Face Snorkel Mask



SNORKEL FULL FACE MASK

Adult Full Face Snorkel Mask



M8018
Snorkel Full Face Mask

Color: Black/Black Blue (Customizable)
Size: Large/Small
Curved Lens



M8028
Snorkel Full Face Mask

Color: Black/Black Blue (Customizable)
Size: Large/Small
Flat Lens



M8038
Snorkel Full Face Mask

Color: Orange Gray (Customizable)
Size: Large/Small
Compatible with Portable Breathing Air Source



M8058A
Snorkel Full Face Mask

Color: Black (Customizable)
Size: Large/Small
Mask and Breathing Tube Designed Separately



M8058C
Snorkel Full Face Mask

Color: Black (Customizable)
Size: Large/Small
Compatible with Portable Breathing Air Supply



M8068
Snorkel Full Face Mask

Color: Black (Customizable)
Size: Large/Small
Detachable dual-tube design, versatile options



K3
Snorkel Full Face Mask

Color: Black/Black Blue (Customizable)
Size: Large/Small
Dual-Tube Design, Non-detachable



M2099
Snorkel Full Face Mask

Color: Blue Gray (Customizable)
Size: Large/Small
Flat Lens



M2099A
Snorkel Full Face Mask

Color: Blue and White (Customizable)
Size: Large/Small
Flat Lens

更多面罩款式请详询业务人员

SNORKEL FULL FACE MASK

Kids' Full Face Snorkel Mask



KF-1



Children's Foldable Snorkel Mask

KF-2



Crocodile-Shaped Kids Snorkel Mask

KF-3



Shark-Shaped Kids Snorkel Mask

KF-4



Hippo-Shaped Kids Snorkel Mask

KF-5



Unicorn-shaped Snorkel Mask

C3



Kids' Dual-Tube Snorkel Mask

K-1



Children's Basic Snorkel Mask

M2099C



Children's Basic Snorkel Mask

SNORKELING SET

Adult and Kids Snorkeling Set



For more styles
contact our sales team



For more styles
contact our sales team



For more styles
contact our sales team



For more styles
contact our sales team



For more styles
contact our sales team



For more styles
contact our sales team



For more styles
contact our sales team



For more styles
contact our sales team

SNORKEL KIT

Combination Play of Mask and Snorkel

Snorkel regulators are widely used for snorkeling, water sports, and underwater observation, providing breathing support during short dives. Designed to enable brief underwater exploration without heavy gear or extensive training.



SNORKEL KIT

Combination Play of Mask and Snorkel

<div data-bbox="75 274 123 329">A</div> <div data-bbox="123 343 669 550"></div> <div data-bbox="123 609 669 668"><div>M8068 & S300Plus Cylinder capacity: 0.5L × 1</div><div>M8068 & S300Plus*2 Cylinder capacity: 0.5L × 2</div></div>	<div data-bbox="697 274 744 329">B</div> <div data-bbox="744 343 1299 550"></div> <div data-bbox="744 609 1299 668"><div>M8068 & S300Pro Cylinder capacity: 0.7L *1</div><div>M8068 & S300Pro*2 Cylinder capacity: 0.7L *2</div></div>
<div data-bbox="75 697 123 752">C</div> <div data-bbox="123 766 669 1015"></div> <div data-bbox="123 1034 669 1093"><div>M8058C & S400 Cylinder capacity: 1.0L*1</div><div>M8058C & S400 Plus Cylinder capacity: 1.0L*1</div></div>	<div data-bbox="697 697 744 752">D</div> <div data-bbox="744 766 1299 1015"></div> <div data-bbox="744 1034 1299 1093"><div>M8058C & S700 Plus Cylinder capacity: 2.0L*1</div></div>
<div data-bbox="75 1125 123 1179">E</div> <div data-bbox="123 1193 669 1701"></div> <div data-bbox="123 1769 669 1828"><div>M8038 & S300Plus Cylinder capacity: 0.5L*1</div><div>M8038 & S300Pro Cylinder capacity: 0.7L*1</div></div>	<div data-bbox="697 1125 744 1179">F</div> <div data-bbox="744 1193 1299 1421"></div> <div data-bbox="744 1460 1299 1519"><div>M8058C & S700 Max Cylinder capacity: 2.0L*2</div></div> <div data-bbox="744 1558 1299 1852"><div>Inflatable product package options</div></div>



LB-1 DROWNING PREVENTION BRACELET

ABOUT PRODUCTS

LB-1 Lifebuoy is an innovative solution for water emergencies, inflating in one second to provide immediate buoyancy for your safety. Lightweight and compact, it features a compass and silicone wristband, ensuring comfortable wear and adaptability to various wrist sizes, offering reliable life-saving assistance. Whether swimming, diving, surfing, kayaking, or fishing, the LB-1 Lifebuoy is your trusted companion for water safety, ensuring peace of mind during aquatic activities.

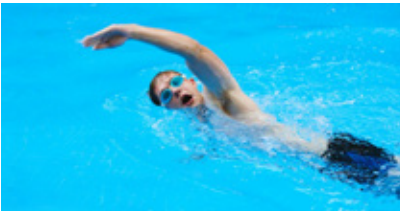


PRODUCT PARAMETERS

Product Name	Product Usage	Cylinder Material	Airbag Material
Drowning Prevention Bracelet	Self-rescue from drowning	Electroless nickel plating	Waterproof TPU composite fabric
Gas Type	For People	Airbag Load Bearing	Product Weight
Frozen hydraulic CO2	Adult/Child	In water, 100kg	140g (excluding gas cylinder)

APPLICABLE SCENE

LB-1 Water Safety Bracelet: versatile, lightweight, and quick self-rescue device for various water scenarios, ensuring user safety and emergency assistance.



Swimming and diving



Surf kayaking



Recreational fishing



C1 Smart Electric Surfboard (Kids Model)

ABOUT PRODUCTS

C1 is an innovative water sports equipment designed specifically for children. Combining electric technology with the features of a surfboard, it offers kids a simple, safe, and enjoyable surfing experience.

Suitable for surfing activities in beaches, lakes, or swimming pools, C1 provides a kid-friendly surfing experience. It helps children develop water sports skills, enhance balance, and enjoy the fun of water sports.

PRODUCT PARAMETERS

Product Buoyancy	Product Push	Surface Speed	Speed mode
Positive buoyancy	5kgf	Still water 1-1.5km/h	2 positions
Charger	Battery Configuration	Battery Life	Product Weight
DC25.2V/2A	DC24V/5AH	30-50 minutes	4kg



APPLICABLE SCENE

Primarily for safe, enjoyable surfing, developing water skills, and enhancing children's aquatic fun.



Kids Surfing Experience



Water sports skills development



Water activities for children



F1 Smart Electric Surfboard (Adult Version)

ABOUT PRODUCTS

The F1 is an innovative water sports equipment designed specifically for adults. Combining electric technology with the characteristics of a surfboard, it offers adults a convenient, exhilarating, and enjoyable surfing experience.

The F1 is suitable for adults to surf in various water bodies such as beaches, lakes, or other suitable surfing areas. It provides excitement and challenges, helping adults master surfing skills, improve balance and fitness, and enjoy the fun of water sports.



PRODUCT PARAMETERS

Product Buoyancy	Product push	Surface speed	Speed Mode
Positive buoyancy	32kgf	Still water 5-15km/h	2 positions
Battery Configuration	adapter	recharge mileage	Product Weight
DC36V/12Ah	DC42V/2A	30-60 minutes	13.5kg

APPLICABLE SCENE

Designed for exciting surfing experiences, versatile for water recreation and transport, enabling enjoyable water travel.



Surfing



Water entertainment activities



Water transportation



PORTABLE DIVING SERIES

S300Plus / S300Pro / S400 / S400Plus / S400Pro / S500 / S700Plus / S700Max

This series offers customization and multiple package options



The design innovation of the portable diving regulator transforms the diving experience, streamlining complex processes into intuitive and convenient ones. The easy-to-use regulator enhances safety and control, expanding diving opportunities for all. It finds applications in recreational diving, vacation spots, water sports centers, and diving education institutions. Additionally, it serves as a vital emergency rescue and backup air source, playing a crucial role in water activities and providing peace of mind and assurance for divers.

PORTABLE DIVING RESPIRATOR S300Plus/S300Pro

The S300Plus/S300Pro is a portable diving respirator designed to offer a simple and safe diving experience for non-professional divers.



ABOUT PRODUCTS

Portable diving respirators simplify diving with streamlined design and easy-to-use regulators.

They offer safe and convenient diving experiences for non-professionals, suitable for recreational diving, resorts, water sports centers, or diving education. However, deep-sea or professional diving still requires traditional high-capacity cylinders and professional gear.

PRODUCT PARAMETERS

Portable diving respirators' underwater usage time is influenced by factors like breathing rate, depth, diver's fitness, skills, and water temperature. Thus, sudden usage time reductions can happen. To ensure safety, monitor pressure gauge changes closely.

Capacity	Usage Time	Work Pressure	Inflation Method
0.5L/0.7L	About 6/8 minutes	200bar/20Mpa	Hand Pump/Electric Pump/Scuba Adapter
Applicable Depth	Size	Certification Standards	Safety Devices
≤ 10m	36.5cm×Φ6cm 36.5cm×Φ7cm	CE/DOT	Equipped with explosion-proof valve



APPLICABLE SCENE

Ideal for personal diving, beach resorts, water sports centers, and diving education, offering non-professionals safe, convenient snorkeling and shallow diving experiences.



Diving experience



Beach resort



Backup air source

PORTABLE DIVING RESPIRATOR S400

The portable diving respirator is an innovative diving equipment designed to provide non-professional divers with a simple and safe diving experience.



ABOUT PRODUCTS

Portable diving respirators simplify diving with streamlined design and easy-to-use regulators.

They offer safe and convenient diving experiences for non-professionals, suitable for recreational diving, resorts, water sports centers, or diving education. However, deep-sea or professional diving still requires traditional high-capacity cylinders and professional gear.

PRODUCT PARAMETERS

Portable diving respirators' underwater usage time is influenced by factors like breathing rate, depth, diver's fitness, skills, and water temperature. Thus, sudden usage time reductions can happen. To ensure safety, monitor pressure gauge changes closely.

Capacity	Usage Time	Work Pressure	Inflation Method
1.0 L	About 10 minutes	200bar/20Mpa	Hand Pump/Electric Pump/Scuba Adapter
Applicable Depth	Size	Certification Standards	Safety Devices
≤10m	36cm×Φ8.9cm	CE/DOT	Equipped with explosion-proof valve



APPLICABLE SCENE

Ideal for personal diving, beach resorts, water sports centers, and diving education, offering non-professionals safe, convenient snorkeling and shallow diving experiences.



Diving experience



Beach resort



Backup air source

PORTABLE DIVING RESPIRATOR S400 PLUS

The portable diving respirator is an innovative diving equipment designed to provide non-professional divers with a simple and safe diving experience.



ABOUT PRODUCTS

Portable diving respirators simplify diving with streamlined design and easy-to-use regulators.

They offer safe and convenient diving experiences for non-professionals, suitable for recreational diving, resorts, water sports centers, or diving education. However, deep-sea or professional diving still requires traditional high-capacity cylinders and professional gear.

PRODUCT PARAMETERS

Portable diving respirators' underwater usage time is influenced by factors like breathing rate, depth, diver's fitness, skills, and water temperature. Thus, sudden usage time reductions can happen. To ensure safety, monitor pressure gauge changes closely.

Capacity	Usage Time	Work Pressure	Inflation Method
1.0 L	About 10 minutes	200bar/20Mpa	Hand Pump/Electric Pump/Scuba Adapter
Applicable Depth	Size	Certification Standards	Safety Devices
≤ 10m	36cm× Φ 8.9cm	CE/DOT	Equipped with explosion-proof valve



APPLICABLE SCENE

Ideal for personal diving, beach resorts, water sports centers, and diving education, offering non-professionals safe, convenient snorkeling and shallow diving experiences.



Diving experience



Beach resort



Backup air source

PORTABLE DIVING RESPIRATOR S400 PRO

The portable diving respirator is an innovative diving equipment designed to provide non-professional divers with a simple and safe diving experience.



ABOUT PRODUCTS

Portable diving respirators simplify diving with streamlined design and easy-to-use regulators.

They offer safe and convenient diving experiences for non-professionals, suitable for recreational diving, resorts, water sports centers, or diving education. However, deep-sea or professional diving still requires traditional high-capacity cylinders and professional gear.

PRODUCT PARAMETERS

Portable diving respirators' underwater usage time is influenced by factors like breathing rate, depth, diver's fitness, skills, and water temperature. Thus, sudden usage time reductions can happen. To ensure safety, monitor pressure gauge changes closely.

Capacity	Usage Time	Work Pressure	Inflation Method
1.0 L	About 10 minutes	200bar/20Mpa	Hand Pump/Electric Pump/Scuba Adapter
Applicable Depth	Size	Certification Standards	Safety Devices
≤10m	36cm×Φ8.9cm	CE/DOT	Equipped with explosion-proof valve



APPLICABLE SCENE

Ideal for personal diving, beach resorts, water sports centers, and diving education, offering non-professionals safe, convenient snorkeling and shallow diving experiences.



Diving experience



Beach resort



Backup air source

PORTABLE DIVING RESPIRATOR \$500

The portable diving respirator is an innovative diving equipment designed to provide non-professional divers with a simple and safe diving experience.



ABOUT PRODUCTS

Portable diving respirators simplify diving with streamlined design and easy-to-use regulators.

They offer safe and convenient diving experiences for non-professionals, suitable for recreational diving, resorts, water sports centers, or diving education. However, deep-sea or professional diving still requires traditional high-capacity cylinders and professional gear.

PRODUCT PARAMETERS

Portable diving respirators' underwater usage time is influenced by factors like breathing rate, depth, diver's fitness, skills, and water temperature. Thus, sudden usage time reductions can happen. To ensure safety, monitor pressure gauge changes closely.

Capacity	Usage Time	Work Pressure	Inflation Method
0.7 L	About 8 minutes	200bar/20Mpa	Hand Pump/Electric Pump/Scuba Adapter
Applicable Depth	Size	Certification Standards	Safety Devices
≤10m	37.5cm×Φ7cm	CE/DOT	Equipped with explosion-proof valve



APPLICABLE SCENE

Ideal for personal diving, beach resorts, water sports centers, and diving education, offering non-professionals safe, convenient snorkeling and shallow diving experiences.



Diving experience



Beach resort



Backup air source

PORTABLE DIVING RESPIRATOR \$700 PLUS

The portable diving respirator is an innovative diving equipment designed to provide non-professional divers with a simple and safe diving experience.



ABOUT PRODUCTS

Portable diving respirators simplify diving with streamlined design and easy-to-use regulators.

They offer safe and convenient diving experiences for non-professionals, suitable for recreational diving, resorts, water sports centers, or diving education. However, deep-sea or professional diving still requires traditional high-capacity cylinders and professional gear.

PRODUCT PARAMETERS

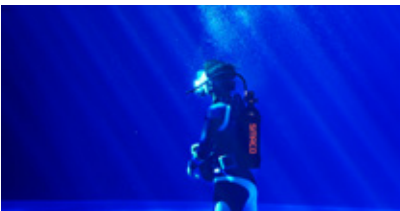
Portable diving respirators' underwater usage time is influenced by factors like breathing rate, depth, diver's fitness, skills, and water temperature. Thus, sudden usage time reductions can happen. To ensure safety, monitor pressure gauge changes closely.

Capacity	Usage Time	Work Pressure	Inflation Method
1.9 L / 2.0 L	About 20 minutes	200bar/20Mpa	Electric Pump/ Scuba Adapter
Applicable Depth	Size	Certification Standards	Safety Devices
≤ 10m	42cm×Φ 11cm	CE/DOT	Equipped with explosion-proof valve



APPLICABLE SCENE

Ideal for personal diving, beach resorts, water sports centers, and diving education, offering non-professionals safe, convenient snorkeling and shallow diving experiences.



Diving experience



Beach resort



Backup air source

PORTABLE DIVING RESPIRATOR \$700 MAX

The portable diving respirator is an innovative diving equipment designed to provide non-professional divers with a simple and safe diving experience.



ABOUT PRODUCTS

Portable diving respirators simplify diving with streamlined design and easy-to-use regulators.

They offer safe and convenient diving experiences for non-professionals, suitable for recreational diving, resorts, water sports centers, or diving education. However, deep-sea or professional diving still requires traditional high-capacity cylinders and professional gear.

PRODUCT PARAMETERS

Portable diving respirators' underwater usage time is influenced by factors like breathing rate, depth, diver's fitness, skills, and water temperature. Thus, sudden usage time reductions can happen. To ensure safety, monitor pressure gauge changes closely.

Capacity	Usage Time	Work Pressure	Inflation Method
1.9 L / 2.0 L *2	About 35 minutes	200bar/20Mpa	Electric Pump/ Scuba Adapter
Applicable Depth	Size	Certification Standards	Safety Devices
≤ 10m	42cm×Φ 11cm	CE/DOT	Equipped with explosion-proof valve



APPLICABLE SCENE

Ideal for personal diving, beach resorts, water sports centers, and diving education, offering non-professionals safe, convenient snorkeling and shallow diving experiences.



Diving experience



Beach resort



Backup air source



Experiential diving kit

The combination of a full-face diving mask and portable diving respirator takes underwater exploration to new heights. Offering panoramic visibility and lightweight design, it ensures comfort, convenience, and safety for divers, enhancing the diving experience to unprecedented levels.



A



M8058B & S400 EXPERIENTIAL DIVING KIT
Cylinder capacity: 1.0L*1

B



M8058B & S400 Plus EXPERIENTIAL DIVING KIT
Cylinder capacity: 1.0L*1

C



M8058B & S700 Plus EXPERIENTIAL DIVING KIT
Cylinder capacity: 1.9L / 2.0L *1

D



M8058B & S700 Max EXPERIENTIAL DIVING KIT
Cylinder capacity: 1.9L / 2.0L *2

Scuba diving equipment series

Our company is dedicated to providing a range of high-quality scuba diving equipment to offer diving enthusiasts the perfect underwater experience. Our product line encompasses various essential equipment needed for diving activities, from full-face diving masks to fins. Each product is meticulously designed and rigorously tested to ensure outstanding performance, reliability, and durability.





M8058 Full-face Diving Mask

ABOUT PRODUCTS

When diving in dangerous environments, protection is vital. The M8058 full-face mask provides greater protection in polluted water compared to standard regulators. It maintains breathing space even if you lose consciousness underwater, aiding survival. It's also practical for divers with TMJ, dentures, disabilities, and those using high-concentration oxygen.

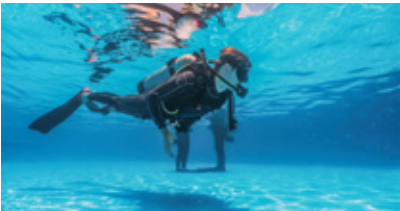
Additionally, the M8058 supports connection to a communication system, enabling you to stay in touch with diving partners or send distress signals in emergencies, ensuring a safer and more enjoyable diving experience.



PRODUCT PARAMETERS

Temperature	-20°C To 50°C
Material	Silicone/tempered Glass/abs
Attachment Method	5-claw Strap System (Quick Release)
Second Stage Connection	Compatible With Standard Second Stage And Closed-circuit Dsv
Communication Interface Specs	Supports Mainstream Communication Headphones And Microphones
Other Features	Includes Surface Breathing Valve

APPLICABLE SCENE



Recreational diving



Diving teaching



Underwater rescue and search and rescue



M8058B Full-face Diving Mask

ABOUT PRODUCTS

The M8058B full-face mask, an upgraded version of the M8058, enhances diving experience with improved visibility. It offers a wider field of view compared to the M8058, enabling clear observation of the surroundings for a more immersive dive. Structural adjustments reinforce support at the mouthpiece and communication device locations, reducing mask deformation risk at depth.

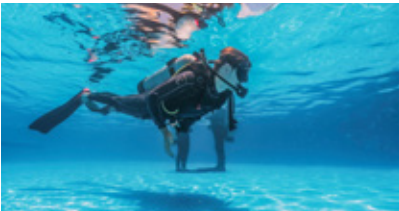
It connects to underwater wireless communication systems, enabling diver-to-diver and diver-to-surface communication. The full-face design protects the entire face during dives, providing a wider field of view and minimizing chin fatigue from prolonged regulator use.



PRODUCT PARAMETERS

Temperature	-20°C To 50°C
Material	Silicone/tempered Glass/abs
Attachment Method	5-claw Strap System (Quick Release)
Second Stage Connection	Compatible With Standard Second Stage And Closed-circuit Dsv
Communication Interface Specs	Supports Mainstream Communication Headphones And Microphones
Other Features	Includes Surface Breathing Valve

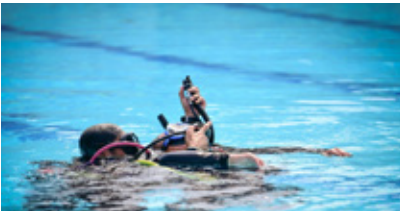
APPLICABLE SCENE



Recreational diving



Diving teaching



Underwater rescue and search and rescue



MQ1 Full-face Diving Mask

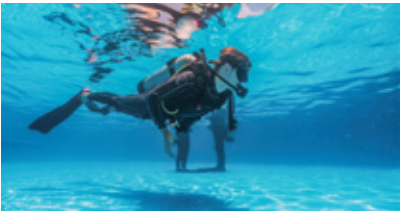
ABOUT PRODUCTS

The MQ1 full-face mask utilizes a positive pressure design, offering comprehensive protection. Equipped with an adjustable nose plug for balanced fit, it features a communication interface for device installation, ensuring communication with diving partners. Its double-sided silicone skirt design prevents water leakage, ensuring a secure seal. The specially designed anti-fog system maintains clear vision during dives. Additionally, it minimizes carbon dioxide retention for improved comfort. Constructed with integrated silicone and ABS plastic frame for durability and comfort. With a maximum depth of 40 meters and weighing just 300 grams, it's suitable for various diving environments.

PRODUCT PARAMETERS
Form: Positive pressure full-face mask
Includes adjustable nose plug for balanced fit
Features communication interface for device installation
Double-sided sealed silicone skirt design
Anti-fog system with airflow exhaust
Design to reduce carbon dioxide retention
Material: Integrated silicone, ABS plastic frame
Maximum working depth in seawater: 40 meters
Weight: 300 grams



APPLICABLE SCENE



Recreational diving



Diving teaching



CCR Diving

S5 Underwater Propeller

Efficient Brushless Motor + Fluid Dynamics Optimized Propeller = Low Power, High Thrust. High Flow Jet Design, 550W for 7.8kg thrust, adults reach 2m/s, 1-hour standard mode endurance.



Proportional throttle free start-stop
Supports cruise control



Efficient brushless motor, hydrodynamic propeller
Maximum thrust up to 7.8kg

ABOUT PRODUCTS

S5 is a stylish underwater propulsion product for diving, swimming, and water sports enthusiasts globally. It boasts a unique design, deep waterproof structure, and exquisite craftsmanship. Available in four colors, it's portable and offers three power modes for different scenarios.

With a modular battery design, S5 allows users to choose between standard and high-capacity batteries based on usage duration. Multiple threaded interfaces on the battery shell accommodate various mounting needs, ensuring an enjoyable underwater experience.

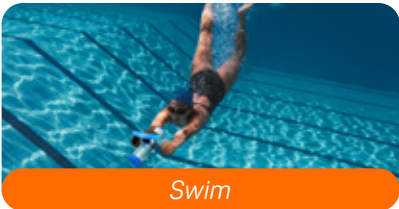


PRODUCT PARAMETERS

Size	Product Weight	Limit Depth	Gear Speed
275×269×133mm	2.05kg (including standard battery)	50m	3rd gear
Battery Life	Battery Capacity (Standard)	Charging Time	Mount
30~120 minutes	129.5Wh	About 1.5h	Support mounting

APPLICABLE SCENE

Suitable for snorkeling, free diving, scuba diving, underwater exploration, and more.



Swim



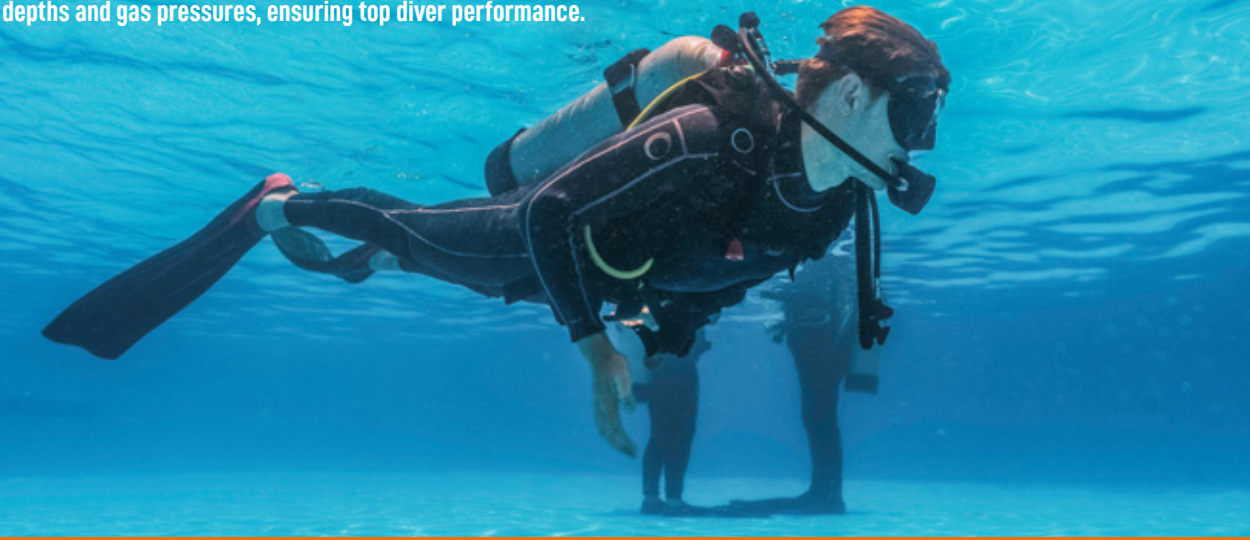
Scuba Diving



Freediving

JD500 Scuba Regulator System

The JD500 scuba regulator has a metal second stage, air balance tech, and adjusts for comfort. It suits different depths and gas pressures, ensuring top diver performance.



ABOUT THE PRODUCT

The JD500 scuba regulator employs a balanced piston design, offering a comfortable breathing experience with adjustable breathing resistance and sensitivity. Whether for specialized diving tasks, scientific research, or recreational diving, this system caters to the needs of divers and delivers exceptional performance.

PRODUCT PARAMETERS	
First stage regulator with balanced diaphragm	Yes
Design of the second stage regulator	Air balanced design
Length of the second stage regulator hose	75cm/100cm
Water temperature	Warm, moderate
Connector type	INT(YOKE)
High-pressure interface	(7/16" 20W UNF-2B) x 2
Low-pressure interface	(3/8" 24W UNF-2B) x 5
Material of the first stage regulator	316 stainless steel body, SUS spring
Intermediate pressure of the first stage regulator	8.5-9.5 Bar
Operating pressure of the second stage regulator	30 bar / 430 psi
Pressure gauge	Luminous single gauge



APPLICABLE SCENARIOS



JD600 Scuba Regulator System

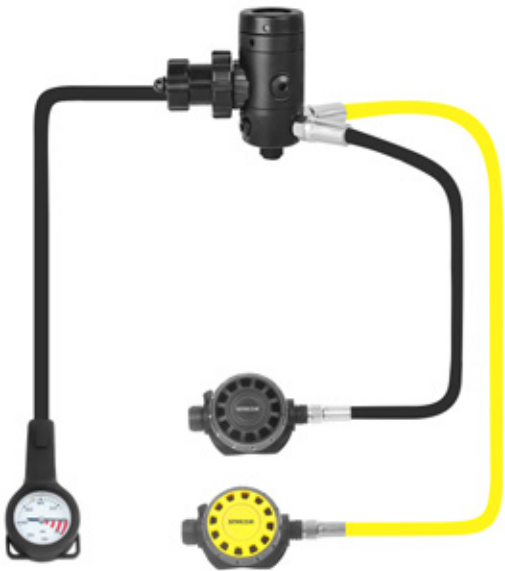
Designed specifically for cold-water diving, equipped with a balanced diaphragm system to ensure excellent performance in low-temperature environments.



ABOUT THE PRODUCT

The JD600 regulator, tailored for cold-water dives, excels in low temperatures with its balanced diaphragm. Featuring two high-pressure ports for gauges and equipment, plus a swivel turret housing five low-pressure ports, it efficiently supplies gas to divers exploring cold-water environments. The set includes a balanced adjustable second-stage regulator, low-pressure hoses (75cm/1m), and a luminescent pressure gauge.

PRODUCT PARAMETERS	
First stage regulator with balanced diaphragm	Yes
Design of the second stage regulator	Air balanced design
Weight	2.9kg
Water temperature	Warm, cold, moderate
Connector type	DIN
Oxygen mixed gas	Up to 40%
High-pressure interface	(7/16" 20W UNF-2B) x 2
Low-pressure interface	(3/8" 24W UNF-2B) x 5
Primary regulator material	316 stainless steel body, SUS spring
Primary regulator intermediate pressure	9.5-10 bar
Secondary regulator working pressure	30 bar / 430 psi



APPLICABLE SCENARIOS



Scuba Diving



Ice Diving



Cave Diving

JD800 Scuba Regulator System

The JD800 scuba regulator has a metal second stage, air balance tech, and adjusts for comfort. It suits different depths and gas pressures, ensuring top diver performance.



ABOUT THE PRODUCT

The JD800 scuba regulator employs a balanced piston design, offering a comfortable breathing experience with adjustable breathing resistance and sensitivity. Whether for specialized diving tasks, scientific research, or recreational diving, this system caters to the needs of divers and delivers exceptional performance.

PRODUCT PARAMETERS	
First stage regulator with balanced diaphragm	Yes
Design of the second stage regulator	Air balanced design
Length of the second stage regulator hose	75cm/100cm
Water temperature	Warm, moderate
Connector type	INT(YOKE)
High-pressure interface	(7/16" 20W UNF-2B) x 2
Low-pressure interface	(3/8" 24W UNF-2B) x 5
Material of the first stage regulator	316 stainless steel body, SUS spring
Intermediate pressure of the first stage regulator	8.5-9.5 Bar
Operating pressure of the second stage regulator	30 bar / 430 psi
Pressure gauge	Luminous single gauge



APPLICABLE SCENARIOS



Scuba Diving



Underwater Operations



Dive Shop

Professional Grade Scuba Tanks

Used to supply divers with the gas needed for breathing underwater, typically filled with air, oxygen, or other gas mixtures, using high-pressure cylinders.



PRODUCT PARAMETERS

Model	Outer Diameter		Volume		Wall Thickness		Work Pressure		Weight		High	
	mm	in	Lts	Cu in	mm	in	bar	psi	kgs	lbs	mm	in
D1	60	2.4	0.6	36.6	4.0	0.2	200	2900.8	0.8	1.7	358	14.1
D2	111	4.4	1.9	114.7	7.4	0.3	200	2900.8	2.6	5.7	325	12.8
D3	184	7.2	5.0	305.1	12.2	0.5	200	2900.8	8.3	18.3	350	13.8
D4	184	7.2	7.0	427.2	12.2	0.5	200	2900.8	10.1	22.3	450	17.7
D5	184	7.2	8.0	488.2	12.2	0.5	200	2900.8	11.0	24.3	500	19.7
D6	184	7.2	9.6	585.8	12.2	0.5	200	2900.8	12.4	27.3	575	22.6
D7	184	7.2	11.0	671.3	12.2	0.5	200	2900.8	13.7	30.2	655	25.8
D8	184	7.2	12.0	732.3	12.2	0.5	200	2900.8	14.6	32.2	705	27.8



APPLICABLE SCENARIOS



Scuba Diving



Underwater Operations



Dive Shop

Carbon Fiber Gas Cylinder

Carbon fiber high-pressure cylinders are vital for divers and firefighters, storing breathing gases. Lightweight and durable, they enhance diving comfort and ensure firefighter safety.



PRODUCT PARAMETERS

Specifications	Outer diameter (mm)	Water volume (L)	Bottle height (mm)	Bottle weight (kg)	Work Pressure
CRP I I I-50-0.22-30-T	54	0.22	194	0.34	300bar
CRP I I I-50-0.3-30-T	54	0.3	251	0.46	300bar
CRP I I I-50-0.37-30-T	54	0.37	295	0.52	300bar
CRP I I I-55-0.35-30-T	61.5	0.35	228	0.48	300bar
CRP I I I-55-0.36-30-T	61.5	0.36	228	0.48	300bar
CRP I I I-55-0.42-30-T	61.5	0.42	259	0.5	300bar
CRP I I I-55-0.45-30-T	61.5	0.45	275	0.55	300bar
CRP I I I-55-0.5-30-T	61.5	0.5	300	0.6	300bar
CRP I I I-69-0.6-30-T	78	0.6	253	0.84	300bar
CRP I I I-69-0.8-30-T	78	0.8	318	1.02	300bar
CRP I I I-78-1.1-30-T	86.5	1.1	311	1.06	300bar
CRP I I I-106-1.1-30-T	113	1.1	220	1.02	300bar
CRP I I I-106-3.0-30-T	115	3	465	2.18	300bar
CRP I I I-106-4.5-30-T	115	4.5	633	3.14	300bar
CRP I I I-120-2.4-30-T	129	2.4	301	1.75	300bar
CRP I I I-120-2.5-30-T	129	2.5	310	1.8	300bar
CRP I I I-120-2.4-20-T	127	2.4	300	1.58	200bar
CRP I I I-124-2.5-20-T	127	2.5	309	1.6	200bar
CRP I I I-124-2.7-30-T	132	2.7	310	1.7	300bar
CRP I I I-145-6.8-30-T	158	6.8	537	4.6	300bar
CRP I I I-161-9-30-T	172	9	575	5.24	300bar
CRP I I I-192-12-30-T	210	12	555	6.5	300bar

APPLICABLE SCENARIOS



Scuba Diving



Fire Fighting



Medical Field



DF02 Diving Flashlight

ABOUT PRODUCTS

The DF02 diving flashlight is designed for diving enthusiasts and outdoor adventurers. It has an IPX8 waterproof rating for safe use underwater up to 100 meters deep.

With a maximum brightness of 3200 lumens, it offers powerful illumination. Equipped with a magnetic control switch, it allows quick switching between different brightness modes to meet various lighting needs. Whether for intense illumination or comfortable reading, the DF02 is versatile.

Ideal for camping, hiking, and nighttime outdoor activities, the DF02 provides stable and reliable illumination, whether underwater or on land, for enjoyable outdoor exploration.



PRODUCT PARAMETERS

	Low light mode	High brightness mode
Brightness	70LM	3200LM
Battery life	60 hours	3 hours and 40 minutes
Range	25 meters	280 meters
Light intensity	156cd	19600cd
Drop-proof height	1 meter	
Waterproof level	100 meters underwater	
Additional features	Intelligent temperature control	

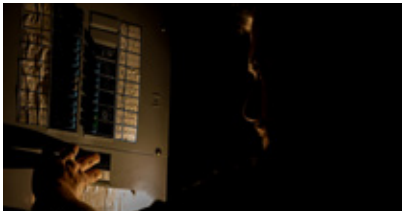
APPLICABLE SCENE



Scuba Diving



Nighttime Outdoor Activities



Family Emergency Backup



B350 Jacket-style Buoyancy Control Device

ABOUT PRODUCTS

The B350 is a high-performance gear designed specifically for divers. It is primarily made of 600D nylon and utilizes TPU heat pressing technology, providing excellent buoyancy control and comfort.

Featuring adjustable shoulder and waist straps, it ensures a snug fit to the body. The easy-to-operate valve system allows for buoyancy and posture adjustment, along with multiple convenient features and accessories. Suitable for divers of all skill levels and various diving environments. Additionally, its modular design makes customization more convenient and streamlined.

PRODUCT PARAMETERS

Size	Buoyancy(N)	Max Cylinder Capacity (liters)
S	110	≤ 15(L)
M	140	
L	180	≤ 18(L)
XL	210	



APPLICABLE SCENE

The B350 has a wide range of applications in leisure diving, diving instruction, underwater rescue, and search and rescue.



Recreational Diving



Diving Teaching



Underwater Rescue And Sar



BackPro Travel BC Backpack Kit

ABOUT PRODUCTS

The BackPro is a diving gear with comfortable straps and a high-capacity semi-dry backpack, suitable for individuals of all body types. Its design not only allows for the storage of a complete set of diving equipment, ensuring their safety, but also helps save on overweight baggage fees, achieving a win-win situation.

This backpack can be detached to function as a fully functional buoyancy control device, with a buoyancy of 20 pounds. It also features a quick-release structure and weight integration system, allowing divers to adjust as needed. Additionally, the backpack is one-size-fits-all, accommodating divers of various body types.

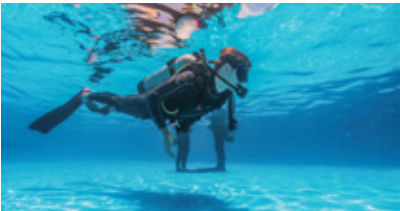
PRODUCT PARAMETERS

Suitable Scenarios	Scuba Diving
Features	Supports Multiple Attachments, Carry-on Compatible
Material	Nylon, TPU
Buoyancy	20 lbs



APPLICABLE SCENE

The BackPro buoyancy backpack is widely used in leisure diving, travel diving, underwater rescue, and search and rescue fields.



Recreational Diving



Travel Diving



Underwater Rescue And Sar



Dual motor design



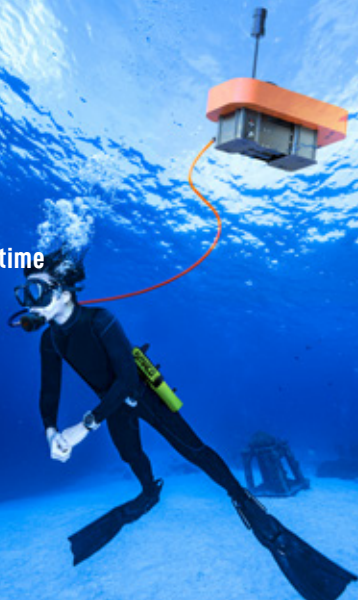
Up to 5 hours of underwater diving time



Triple air filtration



Automatic tilt correction feature



C6 Diving Respiratory System

ABOUT PRODUCTS

The C6 is a groundbreaking tankless diving system offering a unique underwater breathing solution. Its eco-friendly, compact design enables divers to explore the depths in a simple, enjoyable manner.

With dual motors, the C6 ensures diving safety through redundancy, providing continuous power even if one motor fails. Its buoyancy design keeps the unit upright, maintaining balance and preventing water ingress while ensuring a steady air supply for uninterrupted breathing.

Additionally, the C6 employs triple air filtration for cleaner breathing. With a battery life of up to 5 hours, it provides ample air for extended dives, allowing for unrestricted movement and longer exploration times.

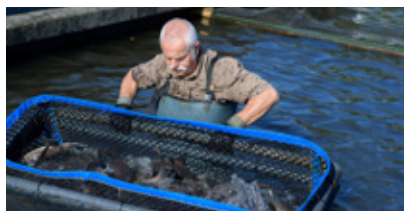
PRODUCT PARAMETERS

Model	Battery Type	Battery Life	Air Flow
C6	Lithium Ion Battery	Up to 5 hours	120L/min
Operating Voltage	Compressor	Maximum Diving Depth	Cooling Method
11.1V	250W brushless motor	10m	Water Cooling



APPLICABLE SCENE

Whether you're a professional diver, fisherman, underwater photographer, or water sports enthusiast, you can all enjoy the fun brought by the C6.



Fishery farming/fishing



Snorkeling & Diving



Underwater Photography



V-EVO All-Position Underwater Robot

ABOUT PRODUCTS

Integrating advanced tech and innovative design, V-EVO offers ultimate underwater exploration. With precision 4K UHD camera, it captures vivid scenes with detail. Its 20MP photo capability ensures image quality.

Outstanding maneuverability and stability, with advanced navigation, provide control. Effortlessly navigate, capturing stunning landscapes. With excellent waterproofing and deep-sea capabilities, operates up to 100 meters, a powerful detection tool.

V-EVO also features live streaming via an app, for real-time sharing of underwater adventures. Whether deep-sea exploration, underwater archaeology, or scientific research, share discoveries and adventures with the world.



4K

Upgraded Imaging to 4K 60FPS



AI Visual Lock-On



166° Ultra Wide-angle



Anti-current 2.0 section



4-hour endurance
4-hour hover shooting
1-hour full-speed shooting



Depth rating: 100m



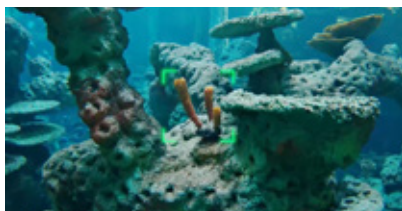
Speed: 3 knots



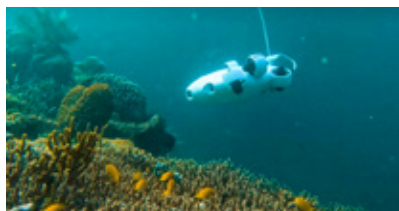
5000 lumens LED

APPLICABLE SCENE

V-EVO is widely used in underwater photography, underwater search and rescue, aquaculture, and other fields.



Underwater Photography



Underwater Search And Rescue



Monitoring Of Aquaculture

Wet suit

The wet suit maintains diver warmth by creating a thin water layer inside, ideal for warmer waters.



W2 Wet suit

PRODUCT PARAMETERS

Made of 3mm/5mm chloroprene rubber, with four-needle and six-thread stitching.

Product Name	W02 Wet Suit
Thickness	3mm/5mm
Material	Chloroprene Rubber
Size	S, M, L, XL, XXL
Color Fastness	Color Fastness Level 4.5, UV European Standard 50++
Water Environment	Temperate Water
Applicable Scenarios	Diving, Snorkeling, Surfing, Deeper Water Activities
Stitching Technique	Four-Needle and Six-Thread Flatlock Stitching



W3 Wet suit

PRODUCT PARAMETERS

Made of 3mm/5mm chloroprene rubber, with four-needle and six-thread stitching.

Product Name	W03 Wet Suit
Thickness	3mm/5mm
Material	Chloroprene Rubber
Size	S, M, L, XL, XXL
Color Fastness	Color Fastness Level 4.5, UV European Standard 50++
Water Environment	Temperate Water
Applicable Scenarios	Diving, Snorkeling, Surfing, Deeper Water Activities
Stitching Technique	Four-Needle and Six-Thread Flatlock Stitching

Flippers

Flippers enhance the diver's propulsion and swimming efficiency, widely used in activities such as diving, swimming, and freediving.



JP1 Carbon Fiber Fins

PRODUCT PARAMETERS

Fin material	Carbon fiber cloth
Foot cover material	Rubber
Size	33-44
Product color	Black, white
Processing customization	Yes
Product pattern	Customization is supported
Performance characteristics	Excellent rebound power, extremely flexible



JP2 Silicone Fins

PRODUCT PARAMETERS

Model	Size	Outside Length	The Length Inside	Width	Weight/pc
Xs	34-35	47cm	22.5cm	18cm	320g
S	36-37	49cm	23.5cm	19cm	380g
M	38-39	51cm	24.5cm	20cm	420g
ML	40-41	53cm	26cm	21cm	480g
L	42-43	56cm	27cm	22cm	535g
XL	44-45	58cm	28cm	23cm	590g

INFLATABLE EQUIPMENT AND ACCESSORIES



Portable High-pressure Air Pump

The product is suitable for divers, emergency rescue personnel, and other outdoor users who need to inflate air cylinders.



Generation One
High-Pressure Air Pump



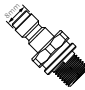
Generation Two
High-Pressure Air Pump



Mini High-Pressure
Air Pump

ABOUT PRODUCTS

Our high-pressure air pump series can fill cylinders up to 20 MPa/200 bar, ideal for divers, emergency responders, and outdoor enthusiasts requiring cylinder inflation in remote areas. The kit includes a portable pump, oil-water separator, and accessories. Operating independently, it provides high-pressure inflation to reach desired pressures. Crafted from quality materials, it offers a reliable, portable solution for ensuring ample gas supply when needed.

Model	Pump Duration	Cylinder Valve Type	Main Material	Inflation Method	Product Features
Generation One High-Pressure Air Pump	0.5L Cylinder: Approx. 500 Pumping Cycles	 8mm Male Connector	Stainless Steel Polishing	External Tube Action Pumping	Equipped with an oil-water separator. Dual filtration with coconut shell activated carbon and cotton core, Excellent filtering performance, Ensures clean and breathable air. Oil-water separation efficiency can reach 90%.
Generation Two High-Pressure Air Pump			Stainless Steel Surface Treatment	Internal Tube Action Pumping	
Mini High-Pressure Air Pump	1.0L Cylinder: Approx. 1000 Pumping Cycles		Stainless Steel Polishing	External Tube Action Pumping	

APPLICABLE SCENE



Mini scuba tank



Tire category



Inflatable boats

Air compressor series

The HEAP1 portable air compressor is mainly for scuba tank filling, offering reliable air support for outdoor enthusiasts.



0 to 200bar
0.5L ABOUT 11 MINUTES

0 to 200bar
1.0L ABOUT 26 MINUTES

0 to 200bar
2.0L ABOUT 46 MINUTES

Heap-1 Portable Vehicle-mounted Air Compressor

FEATURES

- Fast Inflation Quick-connect inlet for efficient inflation.
- Integrated design Integrated reel for easy portability and accessory retention.
- Dual power source Dual power support with built-in voltage inverter.
- High-pressure quick charging 300bar rapid inflation with air-cooling stability.
- Auto-stop at preset pressure User-settable pressure control with auto-stop.
- Dual filtration 5um fiber/activated carbon filter for clean compressed air.
- Eco-friendly, oil-free Oil-free operation for eco-friendly performance.
- Dual CE/FCC certification Certified reliability and safety.
- Safety protection Equipped with explosion-proof valve and auto pressure relief.



PRODUCT PARAMETERS

Model	Power	Operating Voltage	Output Gas Volume	Size	Weight	Maximum Working Pressure	Heat Dissipation
Heap1	250w	Dc 12v-15v Ac 100v-240v	11l/min	24*16*29cm	8.0kg	300bar	Air Cooling

APPLICABLE SCENE

The HEAP1 portable vehicle air compressor inflates small high-pressure cylinders, supporting outdoor enthusiasts' air needs.



Scuba Tanks



Outdoor Activities



Inflatable boats/tires, etc.

Air compressor series

HEAP2 Portable Vehicle-Mounted Air Compressor: Fast Inflation, Portability, Efficient Filtration, Eco-Friendly.

Heap-2 Portable Vehicle-mounted Air Compressor

ABOUT PRODUCTS

The HEAP2 portable air compressor fills scuba cylinders rapidly and at high pressure. It includes a dual filtration system for clean gas and a preset pressure stop function. This allows users to set desired inflation levels beforehand, with automatic shut-off once reached, ensuring efficiency and peace of mind.

Operating oil-free and electrically powered, it's eco-friendly and safe. Equipped with an explosion-proof valve for safety, it's ideal for scuba divers and outdoor enthusiasts, providing reliable air source support.



PRODUCT PARAMETERS

Model	Size	Weight	Output Gas Volume
HEAP2	22.8*26.7*15.5cm	6.9KG	8L/min
Maximum Working Pressure	Voltage	Power	Heat Dissipation
300bar	DC12-15V/AC110-220V	250W	Air Cooling

Heap-3 Rechargeable Portable Air Compressor

ABOUT PRODUCTS

The HEAP3 rechargeable portable air compressor is a powerful and practical device. It not only features fast inflation, efficient filtering, and environmentally friendly oil-free operation but also includes a charging function and a design with detachable and replaceable batteries, providing a more flexible and convenient user experience. Whether it's for diving, outdoor activities, or emergency rescue scenarios, the HEAP3 rechargeable portable air compressor can meet the needs of users, providing stable and reliable air source support.

PRODUCT PARAMETERS

Model	Size	Power Supply	Output Gas Volume
HEAP3	25*22*12.5cm	Lithium battery	8L/min
Max pressure	Working Principle	Power	Heat Dissipation
300bar	Piston compressor	250W	Air Cooling



Air compressor series

Primarily for scuba divers to fill their tanks, providing reliable air support for outdoor enthusiasts.

Heap-4 Single-cylinder Portable Air Compressor

ABOUT PRODUCTS

Mini high-pressure air pump, 30Mpa output. Body with water-cooling system to reduce cylinder temperature, enhancing continuous operation time and lifespan. Equipped with low-pressure safety valve, imported static pressure activated, automatically releases pressure for explosion protection during abnormal conditions. Safety relief valve on valve head prevents continuous operation due to forgetting to shut down, ensuring user safety. Customizable preset pressure function, with waterproof switch design to prevent short circuits from water ingress. Boost cylinder design maintains pressure within range, protecting motor operation. Additionally, equipped with large oil-water separator, filtering oil-water, prolonging cylinder lifespan, with multiple reusable filter cores included.

PRODUCT PARAMETERS

Weight	Max Pressure	Power
18.5kg	30Mpa/300bar	1600W
Size	Using Electric	Cooling Method
37*34*17cm	220V-240V/50Hz	Water-cooled



Heap-5 Dual-cylinder Air Compressor

ABOUT PRODUCTS

HEAP5: Outstanding high-pressure inflation device, 30Mpa/300bar output. Features: built-in explosion-proof valves, preset pressure for auto shutdown, high-temp overload protection, dual-cylinder water cooling for rapid heat dissipation, copper motor for stable power. Versatile: for professional inflation, tire/kayak/cylinder inflation, pipeline testing. With 10 years' experience in air compressor manufacturing, holds national high-tech certification. Upgrades include: motor shafts, stainless steel valve discs, larger water tank for durability and rapid heat dissipation. Committed to innovation, with patents and certifications, providing reliable products.

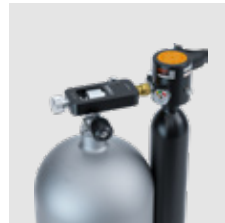
PRODUCT PARAMETERS

Weight	Max Pressure	Power	Cooling Method
35kg	30Mpa/300bar	2200W	Air cooling, water cooling
Size	Voltage	Temperature Protection	Compression Method
39.5*40*45cm	220V-240V/50Hz	≤ 95 °C	Secondary compression



Gas Conversion And Guide Device

For scuba tank filling, it transfers gas between tanks and adjusts air compressor output for safety and compatibility.



ABOUT PRODUCTS

The S01 scuba tank adapter quickly transfers compressed air from standard scuba tanks (YOKE valves, 6L to 20L) to small cylinders, mainly for rapid filling (0.25L to 1.0L). It includes a dump valve for safe, efficient filling.

S01 Scuba Tank Adapter



ABOUT PRODUCTS

The S02 scuba tank adapter, upgraded with a high-pressure hose, enables fast gas exchanges for larger mini cylinders (0.5L to 4.0L). It includes a pressure gauge and dump valve for monitoring tank pressure, facilitating convenient filling and gas exchange. Primarily for quick filling of cylinders over 1.0L, typically done in about 10 seconds.

S02 Scuba Tank Adapter



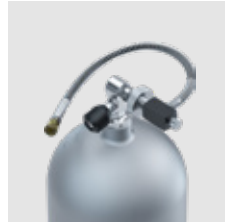
ABOUT PRODUCTS

S03 scuba tank adapter transfers compressed air from standard scuba tanks (DIN valves, 6L to 20L) to small cylinders quickly. It includes a pressure gauge for monitoring tank pressure, ensuring safe and efficient filling while maintaining equipment compatibility.

S03 Scuba Tank Adapter

Gas Conversion And Guide Device

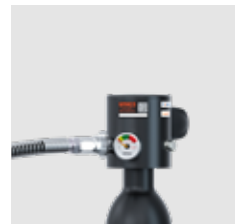
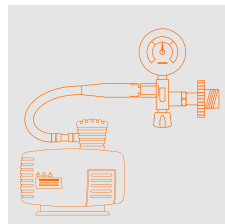
For scuba tank filling, it transfers gas between tanks and adjusts air compressor output for safety and compatibility.



ABOUT PRODUCTS

S04 scuba tank adapter quickly transfers compressed air from standard scuba tanks (DIN valves, 6L to 12L) to small scuba cylinders, filling 0.5L cylinders in 5 seconds. It comes with a reinforced high-pressure extension hose, suitable for 0.5L to 4.0L small scuba cylinders.

S04 Scuba Tank Adapter



ABOUT PRODUCTS

S05 scuba tank adapter is designed to directly connect to air compressors with "DIN Outlet" interface. Its main function is to efficiently compress high-pressure gas into small scuba cylinders, providing a quick and convenient filling solution without the need for additional adapters.

S05 Scuba Tank Adapter



ABOUT PRODUCTS

Add quick disconnect feature to most regulators or full-face masks. Installed between low-pressure regulator hoses and second stages, with locking screws to prevent accidental disconnection. Only for low-pressure connections, under 200psi.

K1 Secondary Regulator Quick Disconnect Adapter

Buoyancy Adjustment Accessory

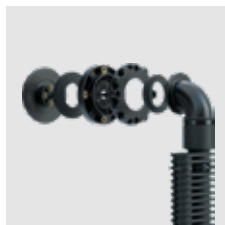
Functional accessories like BCD hoses, inflator valves, and relief valves enhance diving gear performance.



ABOUT PRODUCTS

The BCD low-pressure hose connects the tank to the buoyancy control device, transmitting low-pressure gas for buoyancy inflation and deflation. Typically attached to the tank's low-pressure outlet, it allows divers to adjust buoyancy by controlling gas flow.

Bcd Low-pressure Hose



ABOUT PRODUCTS

The BCD inflator valve, located on one side of the device, connects to the tank's low-pressure outlet. Divers use it to inflate the buoyancy bladder, adjusting buoyancy underwater.

Bcd Inflator Valve Assembly



ABOUT PRODUCTS

The BCD dump valve component releases excess gas from the buoyancy bladder. Divers use it to reduce buoyancy and control descent speed by venting gas from the bladder. Typically located at the bottom or side of the bladder, it allows divers to manually or automatically open and close the valve.

Bcd Dump Valve Assembly

Oil-water Separator

Separates oil and water during inflation for clean, dry gas filling, ensuring diving gear performance and safety for fresh underwater breathing.



ABOUT PRODUCTS

Air compressor dedicated oil-water separator, made of 6061 aluminum, with built-in coconut shell activated carbon and cotton core dual filtration. Internal installation of one-way valve ensures efficiently captures oil, water, and impurities in the filter media, ensuring clean, dry gas filling.

Ys1 Black Compact Oil-water Separator



ABOUT PRODUCTS

Pump-specific oil-water separator, made of 6061 aluminum, with blue anodized surface treatment, and built-in coconut shell activated carbon and cotton core dual filtration. Efficiently captures oil, water, and impurities in the filter media, ensuring clean, dry gas filling.

Ys2 Blue Compact Oil-water Separator



ABOUT PRODUCTS

Upgraded oil-water separator: 6061 aluminum, gold anodized, coconut shell activated carbon and cotton core filtration, non-corrosive. For high-pressure pumps/cylinders. Extra-large filter, 20Mpa working pressure.

Ys3 Large Oil-water Separator

Other Accessories

Secondary regulator, backpack.



ABOUT PRODUCTS

Optimized for personalized breathing experience, energy-saving, improved control and stability, adapting to diverse diving conditions. Flexible to different diving postures for enhanced breathing efficiency, comfort, and stable airflow output through valve design.

Secondary regulator



ABOUT PRODUCTS

A unique two-in-one design, with a main pack and detachable secondary pack, tailored for SMACO portable diving gear. Quick to pack and carry, assembled with zippers and buckles for convenient transportation, solving diving gear transportation woes.

Double backpack

SMACO®

 **+86 755-28483655**
www.smacodive.com